

OFT Series

An all-in-one, user-friendly HMI solution with easy installation, fast deployment, and full touch screen for self-serve kiosks, vending machines, parcel lockers, POS systems, industrial controls, 3D printers, fitness consoles, and more.

CPU, Memory, Storage, Wi-Fi, Touch Screen

Designed and built with many essential features required by almost every embedded applications.

Low Power, Fanless, Wide Range DC-in

9V-36V, 12V-24V wide range DC-in, low power consumption, and fanless operation design.

Multi-OS support and Full Flat design

Pre-loaded with Windows, Android or Linux OS. Allows your customer to plug and play, install the software and go!



Low Power
Consumption



Easy to Clean
Surface



Slim and
Lightweight



Fanless
Operation



Multi-OS
Support



Cost Effective



Faster Time-To-
Market



Rockchip ARM RISC Platform

Built on the power-efficient ARM architecture, these tablet utilize an advanced 22nm quad-core processor clocked up to a swift 2.0GHz for energy-saving performance. The fanless, lightweight and slim design with sleek true-flat contours enables ultimate portability. Supporting 12-24V DC input range and multiple operating systems, these tablet offer a high value solution without compromising on processing capabilities to handle demanding workloads.



Slim Design



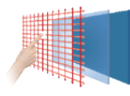
Dual Displays



Ultra Low-Power



Product Name	OFT07W-ADLN	OFT-07WR2	OFT10W-ADLN	OFT-10WR2
LCD Size	7" LCD	7" LCD	10.1" LCD	10.1" LCD
Resolution	600 x 1024	600 x 1024	800 x 1280	800 x 1280
Luminance	350cd/m ²	350cd/m ²	350cd/m ²	350cd/m ²
Viewing Angle	170°/170° (H/V)	170° (H/V)	160°/160° (H/V)	160° (H/V)
Touch Type	PCAP	PCAP	PCAP	PCAP
Processor	Intel® Processor N50 onboard, up to 3.40 GHz, up to 6W TDP	Rockchip RK3568 2.0GHz Quad-core ARM Cortex-A55 Processor	Intel® Processor N200 onboard, up to 3.70 GHz, up to 6W TDP	Rockchip RK3568 2.0GHz Quad-core ARM Cortex-A55 Processor
Processor Graphics	Intel® UHD Graphics	ARM G52 2EE	Intel® UHD Graphics	ARM G52 2EE
System Memory	8GB LPDDR5	2GB DDR4 RAM	8GB LPDDR5	2GB DDR4 RAM
Storage	64GB eMMC Onboard	32G eMMC	64GB eMMC Onboard	32G eMMC
WLAN / BT	802.11 a/b/g/n/ac/ax, BT 5.0 2 x Internal Antenna	802.11 a/b/g/n/ac Wireless LAN, BT 5.0	802.11 a/b/g/n/ac/ax, BT 5.0	802.11 a/b/g/n/ac Wireless LAN, BT 5.0
External I/O Connector	1 x HDMI 2.0a 2 x USB 3.0 1 x RJ45 LAN 1 x 3-Ring Audio Jack 1 x DC Jack	1 x RJ45 LAN 2 x USB 3.0 Type A 1 x HDMI 1.4a 1 x Headphone Jack 1 x DC Jack 1 x Reset Button	1 x HDMI 2.0a 2 x USB 3.0 1 x RJ45 LAN 1 x 3-Ring Audio Jack 1 x DC Jack	1 x RJ45 LAN 2 x USB 3.0 Type A 1 x HDMI 1.4a 1 x Headphone Jack 1 x DC Jack 1 x Reset Button
Internal I/O Connector	1 x A-MIC 2 x USB 2.0 1 x SPK 1 x Touch Button 1 x RS-485/232 1 x I ² C Header 1 x GPIO	1 x MIPI Header 1 x USB Touch Interface 1 x USB CAM_DMIC Interface 2 x RS-232 (TX/RX) 1 x RS-485 1 x GPIO (16bit) 1 x Speaker 1 x A-MIC 1 x Micro SD Slot 1 x Touch Button Connector 1 x I ² C Sensor Interface 1 x Debug Connector 1 x DC-in 4-pin Header 1 x M.2 B-Key Socket	1 x A-MIC 2 x USB 2.0 1 x SPK 1 x Touch Button 1 x RS-485/232 1 x I ² C Header 1 x GPIO	1 x MIPI Header 1 x USB Touch Interface 1 x USB CAM_DMIC Interface 2 x RS-232 (TX/RX) 1 x RS-485 1 x GPIO (16bit) 1 x Speaker 1 x A-MIC 1 x Micro SD Slot 1 x Touch Button Connector 1 x I ² C Sensor Interface 1 x Debug Connector 1 x DC-in 4-pin Header 1 x M.2 B-Key Socket
Power Requirement	DC 12V ~ 24V	DC 12 ~ 24V	DC 12V ~ 24V	DC 12 ~ 24V
Op. Temperature	0°C ~ 40°C (32°F ~ 104°F)	0°C ~ 40°C (32°F ~ 104°F)	0°C ~ 40°C (32°F ~ 104°F)	0°C ~ 40°C (32°F ~ 104°F)
OS Support	Win 10/11, Ubuntu 22.04	Android 11	Win 10/11, Ubuntu 22.04	Android 11
Certification	CE, FCC Class B	CE, FCC Class A	CE, FCC Class B	CE, FCC Class A
Dimensions	7.2" x 4.57" x 0.95" (183x116x24mm)	7.48" x 5.12" x 1.25" (190 x 130 x 31.8 mm)	9.92" x 6.54" x 1.18" (252x166x30mm)	10" x 7" x 1.33" (254 x 178 x 33.8 mm)
Weight	TBD	1.1 lbs (0.5 kg)	TBD	1.54 lbs (0.7 kg)



PCAP Touch



Wide Range DC Input



Fanless Design



Windows 10 IoT



ubuntu

Intel® x86 Architecture

The new Intel® Processor N50 Series, Products formerly Alder Lake-N

The new OFT07W-ADLN and OFT10W-ADLN slim 7" and 10.1" open frame tablets deliver heavyweight speed in an ultralight body. Powered by Intel's 4-core Processor N50/N200 up to 3.70GHz, 8GB memory and 64GB storage, they scream through intensive workloads. Integrated PCAP touchscreen, DC-in and support diverse customizations provide an all-in-one platform ready for your innovative designs under 2 pounds. With rapid deployment, their productivity-tuned performance tackles the most demanding jobs.

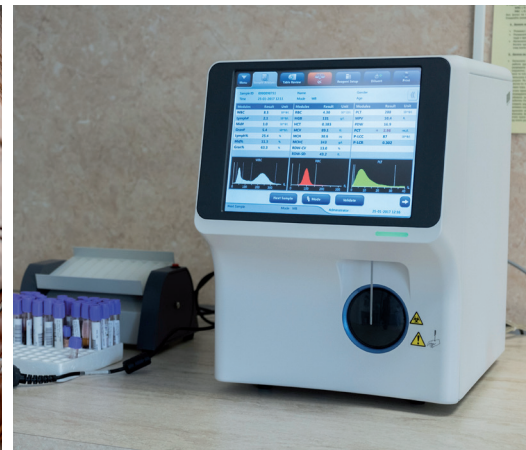


Product Name	OFT10W-3455J	OFT-15W04	OFT-21W04
LCD Size	10.1" LCD	15.6" LCD	21.5" LCD
Resolution	1280 x 800	1920x1080	1920 x 1080
Luminance	350cd/m ²	220cd/m ²	250cd/m ²
Viewing Angle	85°/85° (H/V)	170° (H/V)	178° (H/V)
Touch Type	PCAP	PCAP	PCAP
Processor	Intel® Celeron J3455 Quad Core CPU 1.5GHz, up to 2.3GHz	Intel® Celeron J3455 Quad Core CPU 1.5GHz, up to 2.3GHz	Intel® Celeron J3455 Quad Core CPU 1.5GHz, up to 2.3GHz
Processor Graphics	Intel® HD Graphics 500	Intel® HD Graphics 500	Intel® HD Graphics 500
System Memory	4GB DDR3L RAM	1 x SODIMM DDR3L 4GB	1 x SODIMM DDR3L 4GB
Storage	32GB eMMC Onboard	32GB (eMMC) / M.2 SSD	32GB (eMMC) / M.2 SSD
WLAN / BT	802.11 b/g/n/ac	802.11a/b/g/n/ac (2230)	802.11a/b/g/n/ac (2230)
External I/O Connector	1 x HDMI 4 x USB 3.0 2 x RJ45 LAN 1 x Line-out 1 x DC Jack 1 x USB-OTG (Android Only) Optional 2 x COM Ports	1 x HDMI 2 x USB 3.0 1 x RJ45 LAN 1 x HP Jack 1 x DC Jack 1 x Power button	1 x HDMI 2 x USB 3.0 1 x RJ45 LAN 1 x HP Jack 1 x DC Jack 1 x Power button
Internal I/O Connector	1 x LVDS Header 2 x USB 2.0 Headers (4 Ports) 1 x I ² C Header 1 x SATA III 1 x GPIO 1 x mSATA / Mini-PCIe Socket 1 x uSIM Card Slot 1 x M.2 E-Key 2230 (Wi-Fi)	1 x eDP Header 1 x A-MIC 1 x USB 1 x SPK 1 x Touch Button 1 x RS-485/RS-232 1 x RS-232 1 x DIO 1 x Micro USB (Android only) 1 x SD Card Slot 1 x DC-in Wafer 1 x M.2 B-Key 3042 (SSD or WWAN)	1 x LVDS Header 1 x A-MIC 1 x USB 1 x SPK 1 x Touch Button 1 x RS-485/RS-232 1 x RS-232 1 x DIO 1 x Micro USB (Android only) 1 x SD Card Slot 1 x DC-in Wafer 1 x M.2 B-Key 3042 (SSD or WWAN)
Power Requirement	DC 9V ~ 36V	DC 12V ~ 24V	DC 12V ~ 24V
Op. Temperature	0°C ~ 40°C (32°F ~ 104°F)	0°C ~ 40°C (32°F ~ 104°F)	0°C ~ 40°C (32°F ~ 104°F)
OS Support	Win 10, Android, Ubuntu	Win 10, Ubuntu	Win 10, Ubuntu
Certification	CE, FCC Class B	CE, FCC Class A	CE, FCC Class A
Dimensions	10.16" x 6.57" x 1.57" (258 x 167 x 40mm)	15.12" x 10" x 1.87" (384 x 254 x 47.5 mm)	20.28" x 12.68" x 2.11" (515 x 322 x 53.7mm)
Weight	3 lbs (0.45 kg)	4.85 lbs (2.2kg)	9.48lbs (4.3kg)

OFT Series

7"/10"/15"/21" Open Frame Tablets
Intel® X86, Rockchip ARM RISC Platform

Retail / Medical & Healthcare /
Interactive Kiosk / POS /
Automated Vending / Fitness /
Industrial Control HMI



PCAP Touch Screen
Full Flat Panel, Slim Design



Wall Mount/ Panel Mount Kits
available for easy installation

Fanless Design

RAM and eMMC
onboard
OFT07W-ADLN



Rich External I/O and Expansion: DC-in,
HDMI, USB 3.0, RJ45 LAN
12-24V / 9-36V Wide Range DC-in



Additional I/O: Micro SD Card Slot,
optional COM Ports, Micro USB

OFT-15W04

User Centered Design


Slim
Design


Full Flat
Screen


PCAP
Touch


Dual
Displays


Rich I/O

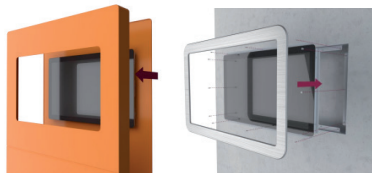
Longevity & Low Power

- Ultra Low Power Consumption on ARM CPU (<10W)
- Long Product Life-cycle 10+ years



Easy Mounting Solutions

- Panel Mount Kit
- Wall Mount Kit
- Extended Brackets



Multi-OS Support

- Windows
- Linux
- Android 11
- Debian 10



BCM Advanced Research
11 Chrysler, Irvine, CA 92618
(949) 470-1888 | BCMSales@bcmcom.com | www.bcmcom.com

